

## EVIDENCE SUMMARY

### What do we know from qualitative research about peoples' care-seeking about oral health?

Developed from the original question submitted by Steve Simmons, June 2010  
Reviewer: Chris Fox. Information Scientist: Helen Nield  
Sponsored by the Shirley Glasstone Hughes Trust

#### Key Terms

**Care-seeking:** patients trying to obtain care/advice/treatment from an health professional/service.

**Patient acceptance of healthcare:** the seeking and acceptance by patients of health services.

**Qualitative research:** research that derives data from observation, interviews, or verbal interactions and focuses on meanings and interpretations of the participants.

**Oral health:** the optimal state of the mouth and normal functioning of the organs of the mouth without evidence of disease.

#### Background

Within medical and nursing literature, both quantitative and qualitative data collection methods have been used to describe peoples' care-seeking, or help-seeking behaviour<sup>1,2,3,4,5</sup>. Health care policy and service redesign may be informed by use of this evidence that places an understanding of the individual patient at the core<sup>6</sup>.

In oral health, what is understood about peoples' perceptions towards care-seeking? There is literature that mainly derives from use of (semi-)quantitative research methods, including the Adult Dental Health Survey<sup>7,8,9,10,11</sup>. However, exploration of the subjective factors influencing peoples' care-seeking behaviour using qualitative research methods may reveal additional insights.

#### Aim

This review aimed to identify and summarise UK primary research studies which have adopted qualitative research data collection methods using open questions to explore peoples' care-seeking, or help-seeking about oral health.

#### Review Method

**Initial search:** Ovid MEDLINE ® 1950 to May Week 3 2010 using search terms 'patient acceptance of health care'; health knowledge, attitudes, practice; choice behaviour; decision making. 151 titles identified, 18 relevant to UK. 4 papers retrieved as full text and examined; 1 title rejected.

#### Further searches:

1. Ovid MEDLINE ® 1950 to May Week 4 2010 using search terms patient acceptance of health care; motivation; dental 'seeking strategies', UK. 152 titles identified. 4 papers retrieved as full text and examined; 4 titles rejected.
2. Ovid MEDLINE ® 1950 to May Week 4 2010 using search terms patient acceptance of health care; narration (relating the particular and the personal in an individual's life story); attitude to health; UK. 61 titles identified. 61 titles rejected.
3. Further searches: included CEED, Cochrane Oral Health Group, ADA, TRIP database, social sciences databases (Science Direct, ASSIA (CSA), Web of Science, EBSCO, SwetsWise), and individual journal searches including EBD, JEBD, JADA. Ten titles identified and retrieved as full text and examined. Eight titles rejected.

#### Findings

374 titles and abstracts arising from the web-based searches were screened. Eighteen potentially-relevant papers were retrieved as full text and reviewed. Five of these 18 papers provided relevant findings, having used open questions as part of qualitative method to develop insight into patients' care-seeking about oral health.

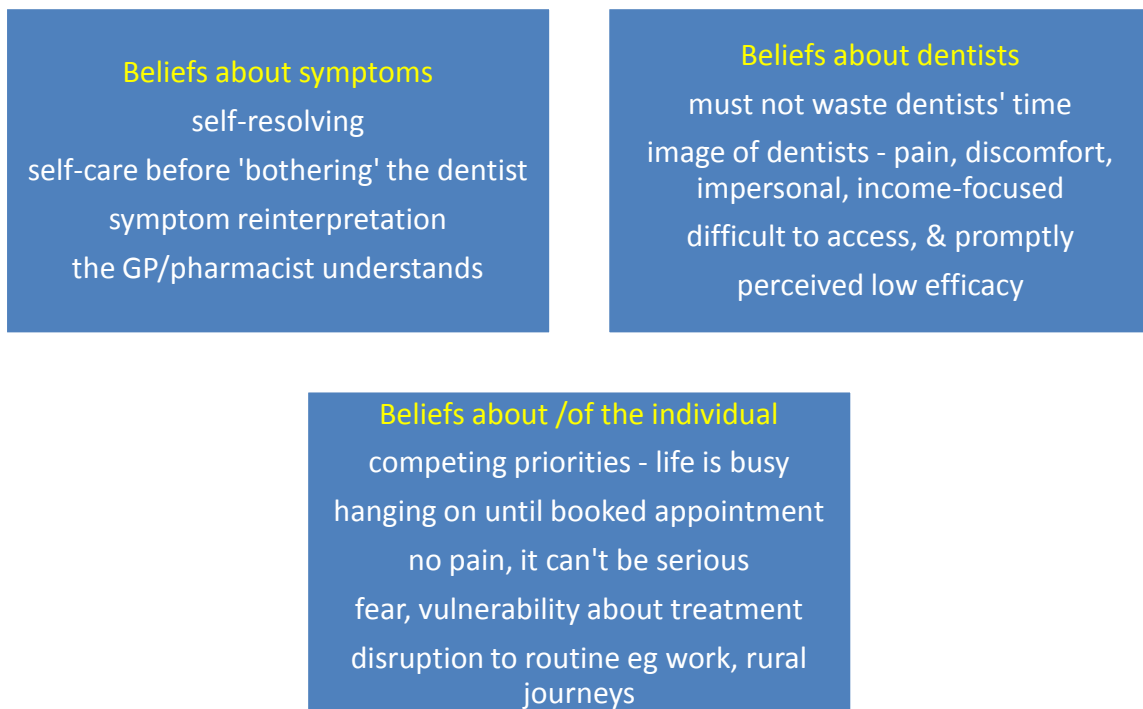
The studies' authors' interpretations of patients' subjective perceptions of oral health-related care-seeking are simply listed in Table One, structured under the headings of barriers or triggers to care-seeking.

These interpretations are further summarised in Figures One and Two.

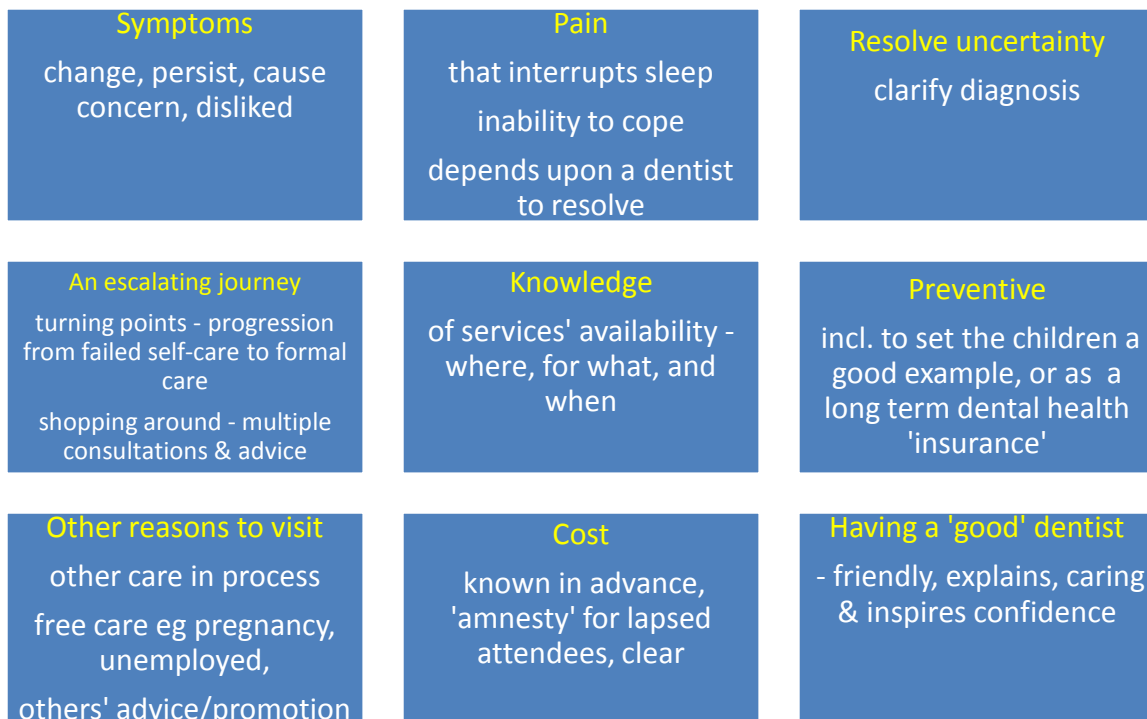
We could find very few qualitative research studies that had used open questions to elucidate UK peoples'

care-seeking about oral health. Of the five papers located, there was considerable diversity in the setting of the data collection eg emergency dental care hospital, cancer care centre, peoples' homes. In addition, the reason for care-seeking varied, such as retrospective accounts of patients with oral cancer diagnosis, patients seeking emergency dental care, and others who gave accounts of factors that may influence their care-seeking for the protection of their oral health. As such, no synthesis of the findings was attempted. However, despite the range of people and places, it is apparent that there was considerable commonality of factors that are barriers and triggers to seeking care from a dentist.

**Figure One. Researchers' interpretations of patients' perceived barriers to care-seeking**



**Figure Two. Researchers' interpretations of patients' perceived triggers to care-seeking**



### Advancing the qualitative review

In depth analysis of the findings of the presented qualitative studies may be undertaken, although there are no 'gold' standard methods amongst the various existing methods for conducting syntheses of qualitative research. One possible approach, meta ethnography, synthesises qualitative data across studies to permit identification of concept relationships, translation and synthesis into one another<sup>12</sup>. Such synthesis is beyond the scope of a rapid review.

### Conclusions

It appears that relatively few studies using qualitative research methods have been undertaken in the UK to understand peoples' care-seeking about oral health. The current findings indicate a wide range of factors influence care-seeking about oral health, either as a trigger or barrier to care.

Further research into peoples' care-seeking about oral health would provide a useful addition to policymakers' and practitioners' understanding of their needs.

**Table One. Details of studies and researchers' interpretations of peoples' subjective perceptions about oral health-related care-seeking**

<b>Studies &amp; interpretations</b>	<b>Scott et al<sup>13</sup></b>	<b>Grant et al<sup>14</sup></b>	<b>Pau et al<sup>15</sup></b>	<b>Anderson &amp; Thomas<sup>16</sup></b>	<b>Finch et al<sup>17</sup></b>
<b>Study sample</b>	57 newly-referred (by GDP/GP) adult patients with potentially malignant oral mucosal symptoms. 2000*.	15 patients under 45 years old, resident in Scotland, previously diagnosed with oral or oropharyngeal cancer. 2006.	35 adults emergency-presenting with toothache, swelling or abscess. 2008.	44 consecutive weekend emergency dental patients (including children) /patients' representatives. 1999.	108 dentate residents, aged 16-59 years, selected upon initial screening for gender, age, social class and dental attendance pattern. 1987.
<b>Study data collection</b>	Semi-structured, 15-30 minute, tape-recorded telephone interviews (interviewer unidentified).	Semi-structured, 20-40 minute face-to-face interviews with an NHS Liaison Counsellor.	Unstructured (with topic guide), 15-90 minute, in depth, face-to-face interviews with a dentist.	Semi-structured, 2-5 minute, face-to-face interviews with a Cardiff dental school researcher.	Eight, approx. 1.5 hour semi-structured group discussions (n=68). SCPR* <sup>2</sup> interviewer. Also 40 semi-structured in depth interviews. (Interviewer unidentified).
<b>Study setting</b>	Oral Medicine Department and Head & Neck Service at a London hospital.	In Maggie's (Cancer Care) Centres, Scotland, or at patient's own home.	A UK dental teaching hospital emergency clinic.	Cardiff dental hospital and the emergency dental clinic at Pontypridd health centre.	Respondents' own homes, or local centres, in Nottingham, Sunderland, Guildford and Somerset.
<b>Study objective</b>	To explore how patients arrive at their decision to	To identify and understand the views of younger	To explore the subjective experience of the	To understand the types of dental problems which	To explore the range of factors which inhibit people from

	seek help for potentially malignant oral symptoms.	oral cancer patients relating to emerging symptoms, routes into and time taken for specialist referral and diagnosis.	toothache phenomenon.	present at weekends. Also to gather data ('toothache stories') on the care-seeking behaviour of emergency dental patients, including: i. triggers for seeking formal care, and ii. pathways to care* <sup>3</sup>	seeking dental treatment. Also to generate ideas on ways by which barriers to seeking dental treatment might be overcome.
<b>I. Researchers' interpretations of peoples' subjective perceptions: barrier(s) to seeking help</b>					
Beliefs about symptoms	1. Patients viewed their symptoms as transient, minor and self-resolving. 2. Self-care & coping with symptoms was considered to be desirable before seeking help.	1. Self-treatment (for up to two months) provided from a pharmacy (some with pharmacist advice). 2. Re-interpretation of symptoms without seeking professional help. 3. Most participants had prior knowledge of oral cancer. Most did not recognise their symptom(s) were serious at least until referred for further tests.	1. Patients also consult with doctors and pharmacists to exclude other causes of symptoms.	1. Symptoms (pain) 'not that great'. 2. Assumption the problem is temporary/self-limiting – particularly post-operative pain. 3. By omission – no patients referred to their problem as 'being an emergency'.	
Beliefs about the health care professional	1. A belief that patients must not waste health care professionals'	Patients' concern about wasting HCPs' time, or appearing to be a hypochondriac.	Perceived difficulty in accessing emergency dental care other than at	1. Low expectations or uncertainty of prompt in-hours appointment	1. Reception and waiting procedures, also the atmosphere and the environment

	<p>(HCPs) time with minor health problems.</p> <p>2. A view that professional attention should not be sought as soon as illness starts.</p> <p>3. Real/perceived issues with access to a HCP eg. distance to travel, the 'hassle' of visiting a HCP, the cost of consultation, inconvenient surgery opening times.</p> <p>4. Negative perceptions of HCPs eg. due to previous experiences, apprehension of consultation, low belief in the professional's efficacy.</p>		<p>the dental hospital emergency clinic.</p>	<p>(especially for unregistered).</p> <p>2. Perceived lack of formal services at weekends.</p> <p>3. Seeking care from (non-dental) health professionals or services that were unable to help.</p> <p>4. Seeking care from dental services when not entitled (unregistered).</p>	<p>at dental surgeries, may either reinforce or reassure existing anxieties about attendance.</p> <p>2. Patients' perceptions of dentists:</p> <p>i. an image associated with potential for pain, hurt, discomfort, whether or not actually experienced</p> <p>ii. impersonal, pre-occupied with the physical or mechanical techniques of dentistry</p> <p>iii. as highly paid – so wanting to treat patients as much, and as fast as possible to achieve this income.</p> <p>3. Enduring recall of negative childhood experiences with the school dentist.</p>
<p>Beliefs of/about an individual/ individual's circumstances</p>	<p>Relative priority of competing demands/ circumstances &amp; time available to</p>	<p>1. 'Patient delay' in seeking HCP advice. The causes included: waiting to consult at an already</p>		<p>1. Ability to function normally, especially with self-care eg painkillers.</p> <p>2. Functioning</p>	<p>1. Fear: of pain, of a specific treatment, of possible reprimand, or other potential embarrassment/</p>

	<p>seek help eg. childcare, holidays, co-morbidities.</p>	<p>booked appointment and, for most, an assumption that lack of pain meant the symptom was not serious.</p> <p>2. Patients usually knew the links between alcohol and smoking with oral cancer risk.</p> <p>3. A few patients had heard of oral cancer, but it did not 'mean anything' to them (ie cancer happens elsewhere in the body).</p> <p>4. None thought that oral cancer 'would happen to them'.</p>		<p>normally as a form of self-care ('keeping busy').</p> <p>3. 'Hanging on' for an appointment already planned.</p> <p>4. Physically unable to care-seek eg on holiday, away from own dentist, lorry driver on road.</p>	<p>discomfort.</p> <p>2. Vulnerability: a relinquishing of control in the sensitive area of the mouth.</p> <p>3. Perception of cost of dental care may postpone a dental visit, especially following a lapse in attendance.</p> <p>Confusion, suspicion and ignorance about the system of charging for care.</p> <p>4. The journey to visit the dentist, including time and cost, were significant in rural areas, and also impacted upon selection of dentist.</p> <p>5. Disruption to working peoples' routine to organise and attend appointments.</p> <p>6. Disruption to a pattern of dental attendance upon leaving school, due to apathy and inertia, also competing time and</p>
--	---	---	--	--	--

					affordability priorities.
<b>II. Researchers' interpretations of peoples' subjective perceptions: trigger(s) to seeking help</b>					
Change in symptoms	Patients' perceived change/ worsening, increased number of symptoms.			Change in intensity, frequency, quality, location or visibility of symptoms	
Persistence of symptoms	Longevity was considered indicative of something being 'wrong'.		Management of toothache can be complex and lengthy – diagnosis and resolution		
Worry/concern about symptoms	When patients became worried - to alleviate both the symptoms and the worry.			Fear that the symptoms are indicative of 'something serious'. Aligned with a perceived urgency of need for care.	
Dislike of symptoms	Care sought if the appearance, nature, or interference of symptoms were considered to be unpleasant, annoying or irritating.				
Pain	Where there was a need to relieve pain.		1. A need for, and dependency upon a dentist/other to alleviate pain. 2. Expression of perceived inability to cope with toothache	1. Pain strong enough to prevent, or interrupt sleep is a key trigger to urgently seeking formal care. 2. Inability to	

			pain to access care: when patients do not know what to do/do anything ie helplessness, disempowerment, incapacitation. Also loss of control, despair and isolation. Potential complex impact upon patient-dentist relationship.	function eg eat.	
Presence of another reason for visiting an health care professional.	Problem raised 'in passing' when visiting the HCP for other reasons – either because an appointment was already booked, or because they would not have made a specific appointment about the oral health symptoms.	A pre-existing condition meant a patient was already receiving regular dental check-ups.			1. Pregnancy in women (free care); parenthood (setting a good example); becoming unemployed (free care); middle-aged persons' fear of becoming edentulous. 2. Effect of an urgent, or very obvious need for dental treatment can convert a patient into being a regular attender.
Desire early diagnosis	To seek help 'better sooner than later' to avoid worsening outcomes.				

Need to resolve uncertainty	To receive a diagnosis, provide understanding and clarity about their symptoms.			Uncertainty about perceived cause.	
Certainty of perceived cause – self-diagnosis				Self-diagnosis and consequent strongly perceived need for dental treatment.	
Advice of significant others	Friends & family advised patients to seek help.	A regional TV cancer awareness campaign prompted a few patients to make an initial appointment with an HCP to investigate their symptoms.		Patients told to seek dental care by another HCP or service.	
Progression/escalation of care-seeking			'Shopping around': multiple visits (by patients dissatisfied with the care received) to the same or different dentist(s) for emergency care before being directed to/ presenting to emergency dental care clinic.	1. 'Turning points': changing from a coping, (but failed) self-care phase to an active, multi-stage process of seeking formal care. 2. Distinction made between 'having problems' with teeth or gums, and 'having a dental problem', one that needs a dentist to resolve (including if attributed to failed dental treatments, if a recurrence of a	1. The barriers to care of anxiety and cost could generally be overcome where there was a need for attendance. 2. Need for attendance was generally a low priority to the young. An increased perception of need could be instrumental in (re-) establishing a regular attendance pattern.

				problem previously treated by a dentist, on GP/pharmacist recommendation, or family/friends made a lay diagnosis).	
Knowledge of, and provision of dental care services				Knowledge that a local emergency dental care service exists and how to contact it.	Availability of extended surgery opening hours, knowledge of location of surgeries, mobile dentists, 'open surgeries' (no appointment).
As a preventative measure					<p>1. Regular dental attendance as 'an insurance policy' to safeguard against dental ill health. For some, a positive way to actively promote dental health in general; for others, perceived to be reactive to fears about the potential effects of not attending.</p> <p>2. Some regular attenders sought care out of habit, or to set an example to their children. A few associated dental attendance with</p>

					class – it is the ‘done thing’ amongst the, or aspiring, ‘higher classes’.
Level of cost					<ol style="list-style-type: none"> <li>1. Reduced level of dental charges, or free treatment.</li> <li>2. A clear charging system.</li> <li>3. Access to an estimate of costs prior to commitment to dental care.</li> <li>4. An ‘amnesty period’ of no cost for the long term non-attender.</li> </ol>
Having a ‘good’ dentist					People perceived a ‘good’ dentist to be able to reduce anxiety/ apprehension for patients. Dentists should be seen to have an approach that is friendly, have a personal touch, explain what is being done, be caring/gentle/reassuring, and inspire confidence.
<b>III. Researchers’ overall interpretations of the findings of peoples’ subjective perceptions</b>					
Researchers’ overall	There are both barriers and	The culture of not consulting a	Care-seeking for toothache may be	The effects of, and meanings attached	Individuals’ oral health care-seeking

<p>interpretations of findings (per study)</p>	<p>triggers to seeking help. The main barriers related to beliefs about symptoms, the HCP &amp; an individual's circumstances.</p> <p>The main triggers to seeking help included symptomatology &amp; the presence of another reason for visiting an HCP.</p>	<p>GDP/GP unless a health issue is perceived to be serious, is a barrier to timely/appropriate care-seeking.</p> <p>The public's gaps in awareness and understanding of oral cancer lead to self-management and delay in seeking professional help.</p> <p>Overall, there are unclear links between advance awareness of oral cancer, considering the symptom may be serious, and deciding to visit an HCP.</p>	<p>associated with toothache pain intensity, the clinical conditions that present as toothache, treatment quality and emergency dental care need management.</p> <p>Perceived inability to cope with toothache may also be associated with these factors.</p>	<p>to, acute dental symptoms are complex. Along with poor awareness of emergency dental services, patients' pathways to care are also complicated and incorporate non-physiological triggers.</p> <p>'Perceived inability to cope' (either with symptoms or uncertainty) is a central organising concept.</p>	<p>is seldom explained in terms of one factor. People tend to present these factors as 'barriers' to dental attendance, expressed in emotions, beliefs, perceptions and practicalities about the individual, or the external factors of service provision.</p> <p>Some of these barriers may be reinforced by certain factors, others to dilute them. The main barriers relate to:</p> <ul style="list-style-type: none"> <li>i. anxiety/fear/apprehension in relation to a dental visit, and</li> <li>ii. factors associated with the cost of a dental visit.</li> </ul>
--	---	---	---	---	---

\* Year of study, or publication. Empty cells – no relevant information in this paper about the specific care-seeking factor.

\*<sup>2</sup> SCPR – Social and Community Planning Research

\*<sup>3</sup> Pathways to care – the chronology of places and people (professional/lay) from which patients seek care prior to visiting the emergency dental service.

## References

- <sup>1</sup> Galdas, PM. Cheater, F. Marshall, P. Men and help-seeking behaviour: literature review. *Journal of Advanced Nursing*. 49(6): 616-623, 2005 Mar. (Abstract).
- <sup>2</sup> Higginson, R. Women's help-seeking behaviour at the onset of myocardial infarction. *British Journal of Nursing*. 17(1): 10-14, 2008 Jan 10-23. (Abstract).
- <sup>3</sup> Farmer, J. Iversen, L. Campbell, NC. Guest, C. Chesson, R. Deans, G. MacDonald, J. Rural/urban differences in accounts of patients' initial decisions to consult primary care. *Health & Place*. 12(2): 210-221, 2006 Jun. (Abstract).
- <sup>4</sup> Roddy, E. Antoniak, M. Britton, J. Molyneux, A. Lewis, S. Barriers and motivators to gaining access to smoking cessation services amongst deprived smokers – a qualitative study. *BMC Health Services Research*. 6:147, 2006. (Abstract).
- <sup>5</sup> Rudell, K. Bhui, K. Priebe, S. Do 'alternative' help-seeking strategies affect primary care use? A survey of help-seeking for mental distress. *BMC Public Health*. 8: 207, 2008. (Abstract).
- <sup>6</sup> Van Baar, JD. Joosten, H. Car, J. Freeman, GK. Partridge, MR. van Weel, C. Sheikh, A. Understanding reasons for asthma (non-)attendance and exploring the role of telephone and e-consulting in facilitating access to care: exploratory qualitative study. *Quality & Safety in Health Care*. 15(3): 191-5, 2006 Jun. (Abstract).
- <sup>7</sup> Office for National Statistics. *Adult Dental Health Survey: Oral Health in the United Kingdom 1998*. The Stationery Office, 1998.
- <sup>8</sup> Macfarlane, TV. Blinkhorn, AS. Davies, RM. Kincey, J. Worthington, HV. Factors associated with health care seeking behaviour for orofacial pain in the general population. *Community Dental Health*. 20: 20-26, 2003.
- <sup>9</sup> Fleming, PS. Proczek, K. DiBiase, AT. I want braces: factors motivating patients and their parents to seek orthodontic treatment. *Community Dental Health*. 25: 166-169, 2008.
- <sup>10</sup> Stoller, EP. Gilbert, GH. Pyle, MA. Duncan, RP. Coping with tooth pain: a qualitative study of lay management strategies and professional consultation. *Special Care Dentistry*. 21(6): 208-215, 2001.
- <sup>11</sup> McGrath, C. Yeung, CYYJ, Bedi, R. Are single mothers in Britain failing to monitor their oral health? *Postgraduate Medical Journal*. 78: 229-232, 2002.
- <sup>12</sup> Britten, N. Campbell, R. Pope, C. Donovan, J. Morgan, M. Pill, R. Using meta ethnography to synthesise qualitative research: a worked example. *Journal of Health Services Research and Policy*. 7(4): 209-251, 2002.
- <sup>13</sup> Scott, SE. Grunfeld, EA. Auyeung, V. McGurk, M. Barriers and triggers to seeking help for potentially malignant oral symptoms: implications for interventions. *American Association of Public Health Dentistry*. 69(1): 34-40, 2009.
- <sup>14</sup> Grant, E. Silver, K. Bauld, L. Day, R. Warnakulasuriya, S. The experiences of young oral cancer patients in Scotland: symptom recognition and delays in seeking professional help. *British Dental Journal*. 208(10): 465-471, 2010 May.
- <sup>15</sup> Pau, AK. Croucher, R. Marcenes, W. Perceived inability to cope and care-seeking in patients with toothache: a qualitative study. *British Dental Journal*. 189(9): 503-506, 2000 Nov.
- <sup>16</sup> Anderson, R. Thomas, DW. 'Toothache stories': a qualitative investigation of why and how people seek emergency dental care. *Community Dental Health*. 20: 106-111, 2003.
- <sup>17</sup> Finch, H. Keegan, J. Ward, K. Sanyal Sen, B. Barriers to the receipt of dental care. A qualitative research study. A report by Social and Community Planning Research. January 1988.